



**A REVIEW OF THE MOTHS OF
CARMARTHENSHIRE
2007**

**by Jon Baker
County Moth Recorder**

INTRODUCTION

This is an analysis on the submitted records of macro-moths in Carmarthenshire during 2007. There were 6160 records covering 404 species. This compares with around 7000 records of 424 species in 2006. The poor weather from mid-May to the end of August is certainly to blame for this drop, and had it been a good summer (or a summer at all!) I'm sure we would have seen closer to 10,000 records generated, given that enthusiasm is still building, and new recorders are coming on board all the time.

ANALYSIS

1. New Species

There were not so many new species added to the county list as there have been in recent years, mainly due to the lack of micro-moth recording *in the rain*, and the law of diminishing returns. The following species were recorded however as new to the county, or upgraded to full county status from lower sections of the list. The record of *Mompha divisella/bradleyi* was determined from a photo taken by Julian Wormald, and although I am convinced it was *M.divisella*, it would require a gen. det. for either to be accepted on a national level. Either species would however be new to the county.

No.	NAME	DATE	LOCATION:	G. REF.	OBSERVERS:
25	<i>Ectoedemia intimella</i>	19/06/2007	Drefach, east of	SN364390	Sam Bosanquet
362	<i>Phyllonorycter acerifoliella</i>	23/10/2007	Johnstown, flyover	SN399196	Jon Baker
598	<i>Elachista kilmunella</i>	17/06/2007	Mawnbwll Du Mawr	SN810269	Sam Bosanquet
654	<i>Pleurota bicostella</i>	17/06/2007	Mawnbwll Du Mawr	SN810269	Sam Bosanquet
788	<i>Bryotropha politella</i>	17/06/2007	Mawnbwll Du Mawr	SN811268	Sam Bosanquet
889	<i>Mompha divisella/bradleyi</i>	08/10/2007	Rhydcymerau	SN572396	Julian Wormald, det:JSB
1182	<i>Epiblema turbidana</i>	08/06/2007	Pontnewydd	SN437073	Jon Baker
1479	Indian Meal Moth	16/09/2007	Penclacwydd	SS532985	Barry and Sandra Stewart
1647	Barred Hook-tip	11/08/2007	Byrgwm, Brechfa	SN5532	David Groom et al
1793	Cloaked Carpet	10/07/2007	Rhydcymerau	SN572395	Martin Lovell
1901	Little Thorn	22/05/2007	Brechfa Forest	SN5537	Martin Lovell
2137	Great Brocade	25/08/2007	North Dock, Llanelli	SS499990	Chris Manley
2235	Tawny Pinion	28/04/2007	Tyrwaun, Pwll	SN469013	Ian Morgan
2396	Rosy Marbled	12/06/2007	Erw Las	SS538998	Ian Morgan, det: JSB

2. Migrants

2006 had been a phenomenal year for migrant rarities, but given that this seems to happen in a three-yearly cycle, 2007 was not expected to produce many excitements in this group. But, despite the numbers of migrants being negligible, there were unexpected stars. Death's-head, *Convolvulus* and Striped Hawk-moths all appeared, as did Great Brocade (new to the county list) and a single Scarce Bordered Straw.

3. Contributors

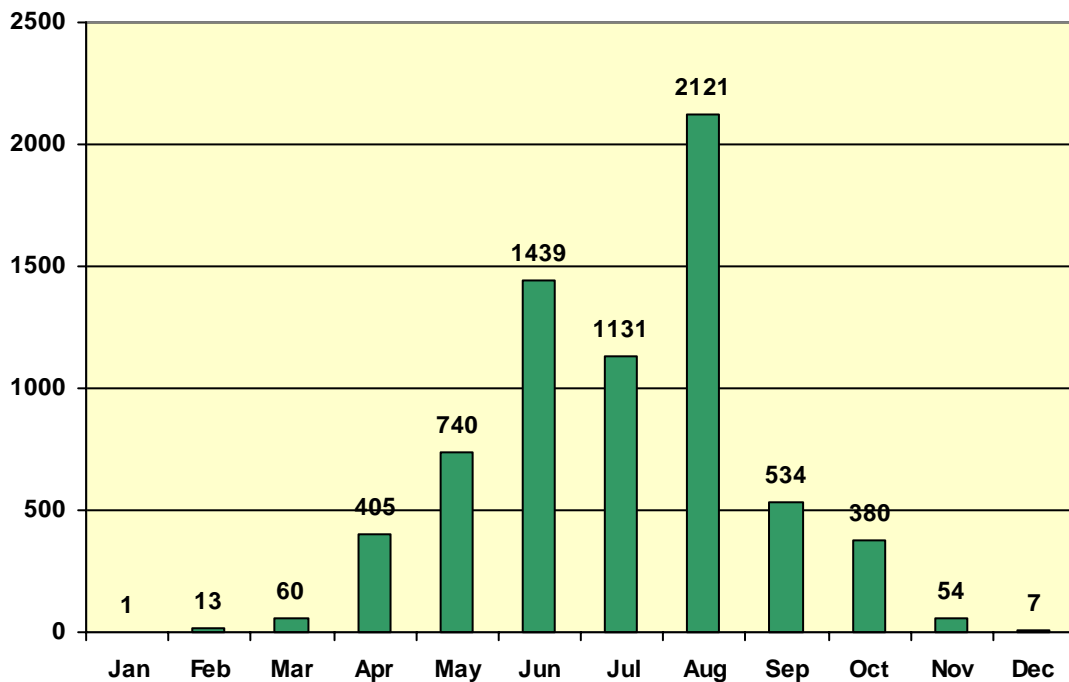
We have seen another rise in the number of people getting involved with recording, so the future is looking good, especially if we can keep the impetus going with the Carmarthenshire Moth Group (and I am eternally grateful to Martin Lovell for all his effort and commitment to that). The following is a list of the main contributors this year.

1. Ian Morgan 1940 records
2. Jon Baker 1551 records
3. Lee Walker 761 records
4. Martin Lovell 704 records
5. Carms Moth Group 403 records
6. Sam Bosanquet 306 records
7. Mat Ridley 302 records
8. Huw Jones 245 records
9. Julian Wormald 165 records
10. Dave & Jan Bannister 152 records
11. Tony Lewis 134 records

Also submitting records were: Arnold Johnson, Barry & Sandra Stewart, Belinda Thorogood, Chris Manley, Colin Jones, David Poulter, Derek Coleman, Elizabeth Goodyear, David Groom & Faye Sharpley, Keith Williams, Martin Warren & Butterfly Conservation, Melanie Collier, Tim White, Simeon Jones, Stuart Blackmore, Wendell Thomas and Peter Twining. My thanks go out to all of you, and apologies if I have missed anyone off the list.

4. Records by Month

The wet summer kept recording levels very subdued through May to July.



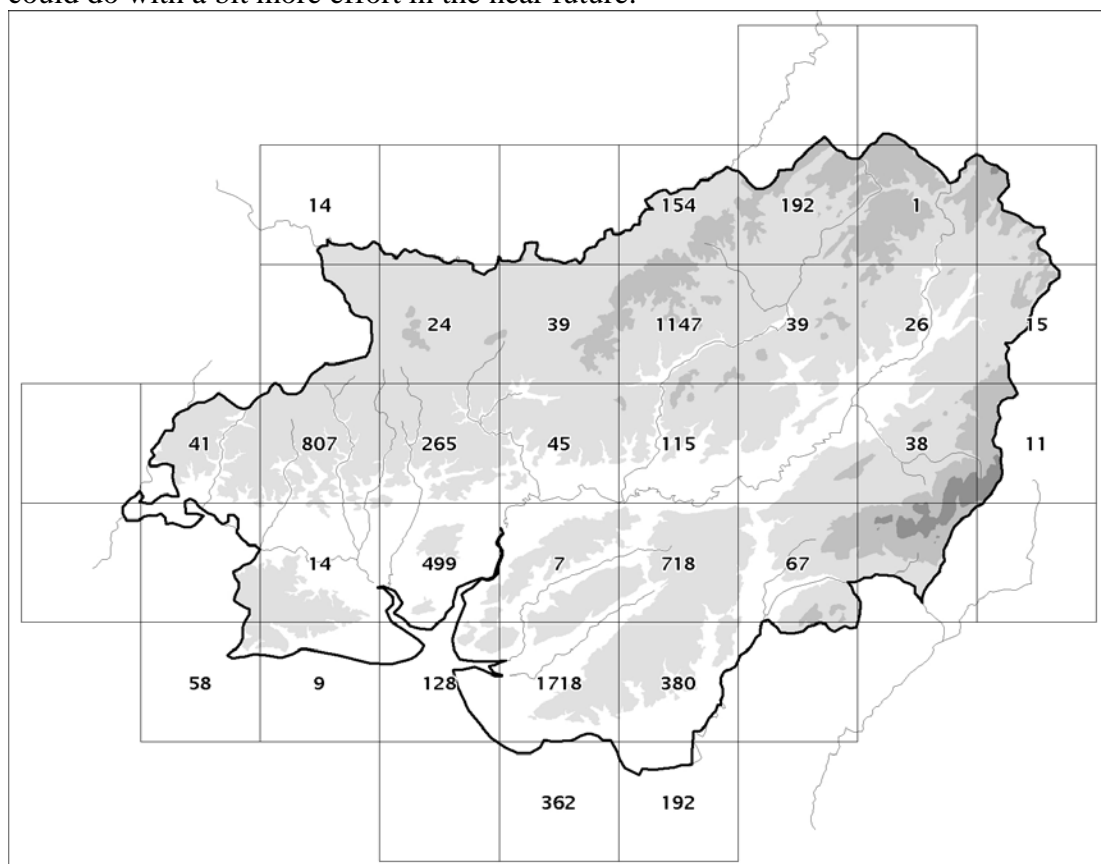
5. Most Frequently Recorded Species

The following is the most frequent by number of records, which does not take into account whether the record refers to an individual moth or multiple moths. Bizarrely there was not a single record of **Mottled Rustic** *Caradrina morpheus*, a widespread and fairly common species.

English Name	RECORDS
Large Yellow Underwing	170
Flame Shoulder	153
Brimstone Moth	146
Common Rustic. agg	93
Dark Arches	90
Common Marbled Carpet	87
Heart & Dart	83
Small Phoenix	79
Common Carpet	65
Peppered Moth	64
Riband Wave	63
Green Carpet	63
Poplar Hawk-moth	62
Lsr Bd-bd Yellow Uwing	61
Square-spot Rustic	61
Clouded Border	57
Silver Y	55
Setaceous Hebrew Character	53
Flame Carpet	51
Buff-tip	51
Pebble Prominent	51
Peach Blossom	50
July Highflyer	50
Engrailed	50
Hebrew Character	50
Buff Ermine	49
Angle Shades	49
Smoky Wainscot	48
Elephant Hawk-moth	45
Coxcomb Prominent	45
Sharp-angled Peacock	44
Willow Beauty	44
Flame	44
Straw Dot	44
Drinker	43
Pale Prominent	42
Dingy Footman	42
Buff Footman	42
Lesser Yellow Underwing	42
Bright-line Brown-eye	42
Spruce Carpet	41
Spectacle	41
Small Fan-footed Wave	40
Snout	40

6. Coverage

As is usual, certain squares received far more coverage than others, with SN40 and SN53 being the subject of intensive trapping during 2007. SN41, SN42 and SN43 could do with a bit more effort in the near future.



Map courtesy of Sam Bosanquet.

7. Extreme Dates

This is the complete list of all macro moth and honorary macro moth species recorded during 2007 in Carmarthenshire. It includes the extreme dates (first sighting and last sighting) in the imago stage, as well as the number of records received. The final column lists the historically earliest date in any given year that the species has been recorded in the county. As you will see, many of these records were broken in 2007, (highlighted in blue) which was quite phenomenal in terms of early emergence dates. **171 species out of 402** on the list broke or equalled the species record for emergence. Some species are now appearing many weeks ahead of when they did a decade ago. Early indications from 2008 suggest another leap forward. This can only be a very worrying trend.

No.	English Name	FIRST	LAST	RECS	EARLIEST
14	Ghost Moth	12/07/2007	12/07/2007	1	03/06/2000
15	Orange Swift	11/08/2007	02/09/2007	4	21/07/1993
16	Gold Swift	05/06/2007	08/07/2007	4	30/05/1995
17	Common Swift	30/04/2007	13/06/2007	8	30/04/2007
18	Map-winged Swift	17/06/2007	11/08/2007	7	06/06/1993
163	Forester	06/06/2007	06/06/2007	1	06/06/2007
169	Six-spot Burnet	10/06/2007	04/08/2007	6	10/06/2007
170	Five-spot Burnet	29/06/2007	29/06/2007	1	10/06/1990
373	Curant Clearwing	26/06/2007	26/06/2007	1	09/06/2004
380	Red-tipped Clearwing	01/06/2007	01/06/2007	1	01/06/2007

382	Six-belted Clearwing	08/07/2007	08/07/2007	1	13/06/2004
1631	December Moth	10/11/2007	07/01/2007	4	03/11/1999
1634	Lackey	14/06/2007	11/08/2007	9	14/06/2007
1636	Grass Eggjar	06/08/2007	20/08/2007	3	28/07/2001
1637	Oak Eggjar	06/08/2007	16/08/2007	4	07/07/2005
1638	Fox Moth	30/04/2007	17/05/2007	5	30/04/2007
1640	Drinker	11/06/2007	06/09/2007	43	11/06/2007
1643	Emperor Moth	12/04/2007	15/05/2007	4	12/04/2007
1645	Scalloped Hook-tip	28/04/2007	11/08/2007	9	28/04/2007
1646	Oak Hook-tip	15/05/2007	16/09/2007	7	15/05/2007
1647	Barred Hook-tip	11/08/2007	11/08/2007	1	11/08/2007
1648	Pebble Hook-tip	29/04/2007	25/08/2007	36	14/04/2003
1651	Chinese Character	13/04/2007	21/08/2007	12	13/04/2007
1652	Peach Blossom	14/04/2007	21/09/2007	50	14/04/2007
1653	Buff Arches	08/06/2007	15/08/2007	30	19/05/1990
1654	Figure of Eighty	26/05/2007	12/06/2007	7	26/05/2007
1657	Common Lutestring	22/05/2007	11/06/2007	5	09/05/2000
1659	Yellow Horned	07/03/2007	11/04/2007	4	07/03/2007
1660	Frosted Green	08/04/2007	02/05/2007	8	01/04/2000
1661	Orange Underwing	08/04/2007	08/04/2007	1	08/04/2007
1663	March Moth	20/02/2007	04/05/2007	14	20/02/2007
1665	Grass Emerald	14/07/2007	20/08/2007	3	14/06/2003
1666	Large Emerald	26/06/2007	11/08/2007	7	18/06/2002
1669	Common Emerald	09/06/2007	27/08/2007	9	09/06/2007
1674	Little Emerald	22/05/2007	22/06/2007	5	16/05/1988
1681	Clay Triple-lines	04/05/2007	18/06/2007	3	04/05/2007
1682	Blood-vein	23/05/2007	11/09/2007	25	19/05/1990
1690	Small Blood-vein	06/06/2007	06/06/2007	1	06/06/2007
1692	Lesser Cream Wave	19/06/2007	18/07/2007	5	19/06/2007
1693	Cream Wave	01/05/2007	07/07/2007	12	16/04/2003
1702	Small Fan-footed Wave	14/06/2007	31/08/2007	40	14/06/2007
1708	Single-dotted Wave	10/06/2007	13/09/2007	21	10/06/2007
1713	Riband Wave	05/06/2007	01/09/2007	63	30/05/2004
1718	Oblique Striped	07/07/2007	05/09/2007	4	23/04/1992
1719	Oblique Carpet	24/05/2007	25/08/2007	5	20/05/1995
1722	Flame Carpet	20/04/2007	29/09/2007	51	20/04/2007
1724	Red Twin-spot Carpet	11/04/2007	06/09/2007	32	11/04/2007
1725	Dark-barred Twin-spot Carpet	09/04/2007	27/08/2007	19	09/04/2007
1727	Silver-ground Carpet	02/05/2007	22/06/2007	29	02/05/2007
1728	Garden Carpet	26/04/2007	12/10/2007	31	26/04/2007
1732	Shaded Broad-bar	08/07/2007	16/08/2007	11	21/06/2003
1733	Leal Belle	06/06/2007	17/06/2007	3	25/05/2004
1734	July Belle	16/06/2007	08/07/2007	3	16/06/2007
1737	Small Argent and Sable	11/08/2007	11/08/2007	1	09/06/2005
1738	Common Carpet	05/05/2007	12/09/2007	65	15/04/2003
1739	Wood Carpet	19/06/2007	19/06/2007	1	06/06/2004
1740	Galium Carpet	07/07/2007	08/08/2007	4	03/07/2003
1742	Yellow Shell	18/05/2007	13/09/2007	30	18/05/2007
1746	Shoulder Stripe	25/03/2007	20/04/2007	8	05/02/1992
1747	Streamer	06/04/2007	02/05/2007	6	19/03/2003
1748	Beautiful Carpet	24/05/2007	31/08/2007	7	16/05/1988
1750	Water Carpet	12/04/2007	22/05/2007	12	13/03/1993
1751	Devon Carpet	28/04/2007	04/09/2007	18	21/04/2002
1752	Purple Bar	15/05/2007	15/09/2007	24	12/05/2005
1753	Striped Twin-spot Carpet	02/08/2007	02/08/2007	1	19/05/2004
1754	Phoenix	12/06/2007	24/08/2007	12	12/06/2007
1755	Chevron	24/07/2007	06/09/2007	10	06/07/1995
1756	Northern Spinach	05/06/2007	21/08/2007	11	29/05/2003
1758	Barred Straw	14/06/2007	12/07/2007	10	14/06/2007
1759	Small Phoenix	12/04/2007	13/09/2007	79	12/04/2007

1760	Red-green Carpet	05/09/2007	14/04/2007	11	05/09/2007
1762	Dark Marbled Carpet	01/08/2007	13/09/2007	18	06/07/2000
1764	Common Marbled Carpet	02/05/2007	31/10/2007	87	02/05/2007
1765	Barred Yellow	10/06/2007	11/08/2007	6	09/06/1993
1766	Blue-bordered Carpet	13/08/2007	25/08/2007	2	09/07/1992
1767	Pine Carpet	02/10/2007	02/10/2007	2	22/09/2006
1768	Grey Pine Carpet	17/05/2007	12/10/2007	4	06/05/2002
1769	Spruce Carpet	13/04/2007	04/11/2007	41	12/04/2003
1773	Broken-barred Carpet	04/05/2007	12/08/2007	7	15/04/2003
1775	Mottled Grey	22/03/2007	12/04/2007	5	17/03/2005
1776	Green Carpet	04/05/2007	13/10/2007	63	20/04/2002
1777	July Highflyer	08/06/2007	12/09/2007	50	08/06/2007
1778	May Highflyer	28/04/2007	10/06/2007	5	28/04/2007
1779	Ruddy Highflyer	28/04/2007	28/04/2007	1	24/04/2005
1782	Fern	05/09/2007	05/09/2007	1	02/06/1974
1784	Pretty Chalk Carpet	14/07/2007	18/07/2007	2	07/06/2004
1789	Scallop Shell	10/06/2007	27/08/2007	9	10/06/2007
1793	Clonked Carpet	10/07/2007	10/07/2007	1	10/07/2007
1794	Sharp-angled Carpet	07/07/2007	20/08/2007	3	05/06/2000
1795	November Moth	04/10/2007	10/11/2007	11	04/10/2007
1795.5	November Moth sp	07/10/2007	10/11/2007	7	29/09/2006
1796	Pale November Moth	12/10/2007	30/10/2007	2	12/10/2007
1797	Autumnal Moth	13/10/2007	13/10/2007	1	13/10/2007
1799	Winter Moth	21/11/2007	31/12/2007	5	11/11/2005
1802	Rivulet	04/05/2007	30/08/2007	12	04/05/2007
1803	Small Rivulet	09/06/2007	31/08/2007	15	01/06/1998
1807	Grass Rivulet	06/06/2007	08/07/2007	2	12/05/2002
1808	Sandy Carpet	30/04/2007	25/08/2007	9	30/04/2007
1809	Twin-spot Carpet	24/07/2007	11/08/2007	2	05/06/1993
1811	Slender Pug	14/07/2007	16/08/2007	2	08/07/2002
1813	Haworth's Pug	18/07/2007	18/07/2007	1	18/07/2007
1817	Foxglove Pug	28/04/2007	11/08/2007	16	28/04/2007
1819	Mottled Pug	04/05/2007	16/06/2007	3	04/05/2007
1825	Lime-speck Pug	23/05/2007	05/09/2007	17	23/05/2007
1826	Triple-spotted Pug	01/08/2007	01/08/2007	1	15/06/2000
1827	Freyer's Pug	06/06/2007	10/06/2007	2	31/05/2003
1830	Wormwood Pug	10/07/2007	12/09/2007	7	26/05/2001
1832	Currant Pug	24/05/2007	21/06/2007	3	09/05/2002
1833	Bleached Pug	31/07/2007	27/08/2007	5	08/07/1999
1834	Common Pug	14/04/2007	22/06/2007	27	14/04/2007
1835	White-spotted Pug	14/07/2007	31/08/2007	6	20/04/2002
1837	Grey Pug	05/05/2007	11/08/2007	10	05/05/2007
1838	Tawny Speckled Pug	02/08/2007	18/09/2007	4	12/07/2006
1846	Narrow-winged Pug	12/04/2007	06/09/2007	4	12/04/2007
1849	Ash Pug	06/08/2007	31/08/2007	2	24/05/2001
1851	Golden-rod Pug	01/08/2007	06/09/2007	8	24/04/2005
1852	Brindled Pug	13/03/2007	04/05/2007	15	13/03/2007
1853	Oak-tree Pug	14/04/2007	05/05/2007	3	14/04/2007
1856	Larch Pug	24/05/2007	16/08/2007	5	15/04/2003
1857	Dwarf Pug	03/05/2007	25/05/2007	4	03/05/2007
1858	V-Pug	09/04/2007	12/10/2007	20	06/04/1995
1859	Sloe Pug	06/06/2007	06/06/2007	1	06/06/2007
1860	Green Pug	06/06/2007	10/07/2007	8	06/06/2007
1861	Bilberry Pug	12/07/2007	12/07/2007	1	13/06/1999
1862	Double-striped Pug	09/04/2007	06/09/2007	30	09/04/2007
1867	Treble-bar	07/05/2007	12/10/2007	8	07/05/2007
1873	Welsh Wave	22/05/2007	16/08/2007	4	22/05/2007
1874	Dingy Shell	18/06/2007	11/08/2007	4	22/05/2004
1875	Small White Wave	02/05/2007	11/08/2007	7	02/05/2007
1877	Waved Carpet	22/05/2007	12/07/2007	8	22/05/2007

1881	Early Tooth-striped	02/04/2007	27/04/2007	7	16/03/1990
1882	Small Scraphim	30/04/2007	11/08/2007	14	30/04/2007
1883	Yellow-barred Brimble	22/05/2007	16/08/2007	5	19/04/2002
1884	Maggie	12/06/2007	30/08/2007	18	12/06/2007
1885	Clouded Maggie	31/07/2007	31/07/2007	1	02/06/1974
1887	Clouded Border	14/04/2007	16/08/2007	57	14/04/2007
1888	Scorched Carpet	12/08/2007	12/08/2007	1	16/04/2003
1890	Sharp-angled Peacock	11/04/2007	02/09/2007	44	11/04/2007
1893	Tawny-barred Angle	03/05/2007	06/09/2007	15	03/05/2007
1894	Latticed Heath	05/05/2007	11/08/2007	8	05/05/2007
1901	Little Thorn	22/05/2007	22/05/2007	1	22/05/2007
1902	Brown Silver-line	14/04/2007	26/06/2007	32	12/04/2003
1903	Barred Umber	03/05/2007	05/06/2007	6	30/04/1999
1904	Scorched Wing	04/05/2007	14/06/2007	15	04/05/2007
1906	Bristone Moth	11/04/2007	11/10/2007	146	11/04/2007
1907	Bordered Beauty	14/07/2007	30/08/2007	12	13/07/2003
1909	Speckled Yellow	15/05/2007	15/05/2007	1	18/04/2003
1913	Canary-shouldered Thorn	23/07/2007	03/10/2007	26	15/07/2003
1914	Dusky Thorn	22/08/2007	09/10/2007	19	05/08/2003
1915	September Thorn	11/08/2007	11/08/2007	1	09/08/1999
1917	Early Thorn	07/03/2007	21/08/2007	39	07/03/2007
1919	Purple Thorn	12/04/2007	11/08/2007	12	03/04/1999
1920	Scalloped Hazel	27/04/2007	02/10/2007	18	08/04/2000
1921	Scalloped Oak	27/06/2007	22/08/2007	20	21/06/1992
1922	Swallow-tailed Moth	10/06/2007	14/07/2007	4	10/06/2007
1923	Feathered Thorn	10/10/2007	05/12/2007	11	30/09/1971
1926	Pale Brimmed Beauty	29/01/2007	23/03/2007	6	04/11/1994
1927	Brimmed Beauty	02/04/2007	24/05/2007	24	02/04/2007
1930	Oak Beauty	07/03/2007	20/04/2007	11	25/02/1971
1931	Peppered Moth	27/04/2007	27/08/2007	64	27/04/2007
1932	Spring Usher	17/02/2007	26/02/2007	3	02/02/1973
1934	Dotted Border	17/02/2007	27/04/2007	12	05/02/1992
1935	Mottled Umber	29/09/2007	31/12/2007	9	29/09/2007
1936	Waved Umber	20/04/2007	22/05/2007	3	16/04/2003
1937	Willow Beauty	02/05/2007	12/10/2007	44	02/05/2007
1940	Satin Beauty	27/06/2007	21/08/2007	6	14/06/2003
1941	Mottled Beauty	21/05/2007	10/11/2007	32	19/05/1999
1945	Brussels Lace	23/05/2007	07/08/2007	9	23/05/2007
1947	Engrailed	09/03/2007	18/10/2007	50	28/02/1999
1949	Square Spot	14/04/2007	12/06/2007	13	12/04/2003
1951	Grey Birch	11/04/2007	12/06/2007	5	11/04/2007
1952	Common Heath	04/05/2007	13/06/2007	4	19/04/2002
1954	Bordered White	16/06/2007	16/06/2007	1	27/04/1993
1955	Common White Wave	03/05/2007	31/08/2007	20	03/05/2007
1956	Common Wave	28/04/2007	31/08/2007	34	28/04/2007
1957	White-pinion Spotted	05/05/2007	05/06/2007	5	05/05/2007
1958	Clouded Silver	14/04/2007	12/07/2007	20	14/04/2007
1960	Early Moth	14/02/2007	14/02/2007	1	13/01/1992
1961	Light Emerald	19/05/2007	06/10/2007	32	19/05/2007
1962	Barred Red	07/06/2007	14/07/2007	3	26/05/1997
1964	Annulet	02/08/2007	02/08/2007	1	08/07/1975
1968	Yellow Belle	04/05/2007	05/09/2007	8	23/04/2003
1970	Grass Wave	25/05/2007	25/05/2007	1	24/05/2004
1972	Convolvulus Hawk-moth	29/08/2007	29/08/2007	1	12/08/2003
1973	Death's-head Hawk-moth	23/10/2007	23/10/2007	1	09/05/1998
1976	Privet Hawk-moth	02/05/2007	20/08/2007	13	02/05/2007
1979	Lime Hawk-moth	28/04/2007	09/06/2007	7	28/04/2007
1980	Eyed Hawk-moth	02/05/2007	18/07/2007	9	02/05/2007
1981	Poplar Hawk-moth	27/04/2007	25/08/2007	62	27/04/2007
1984	Humming-bird Hawk-moth	11/08/2007	17/08/2007	2	10/04/1997

1990	Striped Hawk-moth	02/07/2007	02/07/2007	1	21/06/2003
1991	Elephant Hawk-moth	04/05/2007	11/08/2007	45	04/05/2007
1992	Small Elephant Hawk-moth	07/06/2007	18/07/2007	5	19/05/2004
1994	Buff-tip	21/04/2007	11/08/2007	51	21/04/2007
1995	Puss Moth	11/04/2007	23/06/2007	8	11/04/2007
1996	Alder Kitten	03/05/2007	03/05/2007	1	03/05/2007
1997	Sallow Kitten	28/04/2007	25/08/2007	16	16/04/2003
1999	Lobster Moth	14/04/2007	21/06/2007	25	14/04/2007
2000	Iron Prominent	11/04/2007	31/08/2007	33	11/04/2007
2003	Pebble Prominent	07/04/2007	18/08/2007	51	07/04/2007
2005	Great Prominent	08/04/2007	17/05/2007	7	08/04/2007
2006	Lesser Swallow Prominent	17/04/2007	25/08/2007	21	04/04/2002
2007	Swallow Prominent	11/04/2007	23/08/2007	25	11/04/2007
2008	Coxcomb Prominent	13/04/2007	22/08/2007	45	09/04/2003
2011	Pale Prominent	27/04/2007	26/08/2007	42	14/04/2003
2014	Marbled Brown	03/05/2007	08/06/2007	17	03/05/2007
2015	Lunar Marbled Brown	08/04/2007	12/06/2007	23	03/04/1999
2017	Small Chocolate-tip	18/07/2007	18/07/2007	2	10/05/2002
2028	Pale Tussock	11/04/2007	07/06/2007	32	11/04/2007
2030	Yellow-tail	23/06/2007	31/08/2007	26	23/06/2007
2033	Black Arches	24/07/2007	13/09/2007	32	09/07/2003
2035	Round-winged Muslin	26/06/2007	06/08/2007	6	16/06/1989
2037	Rosy Footman	12/06/2007	01/09/2007	38	12/06/2007
2038	Muslin Footman	26/06/2007	10/07/2007	2	26/06/2007
2039	Red-necked Footman	06/06/2007	10/06/2007	2	12/05/2005
2040	Four-dotted Footman	04/06/2007	14/07/2007	4	04/06/2007
2043	Orange Footman	04/06/2007	04/06/2007	1	25/05/2005
2044	Dinky Footman	21/06/2007	12/09/2007	42	21/06/2007
2047	Scarce Footman	26/06/2007	11/08/2007	11	17/06/2005
2049	Buff Footman	23/06/2007	13/09/2007	42	23/06/2007
2050	Common Footman	07/07/2007	22/08/2007	18	26/06/2005
2051	Four-spotted Footman	12/07/2007	11/08/2007	7	09/07/2003
2057	Garden Tiger	22/06/2007	08/08/2007	11	21/06/2003
2060	White Ermine	20/04/2007	22/06/2007	33	20/04/2007
2061	Buff Ermine	04/05/2007	11/08/2007	49	04/05/2007
2063	Muslin Moth	08/04/2007	01/06/2007	23	08/04/2007
2064	Ruby Tiger	04/04/2007	22/08/2007	25	04/04/2007
2068	Scarlet Tiger	30/05/2007	22/06/2007	10	30/05/2007
2069	Cinnabar	28/04/2007	10/07/2007	17	09/04/2003
2078	Least Black Arches	14/04/2007	22/05/2007	8	14/04/2007
2081	White-line Dart	08/07/2007	11/08/2007	9	10/06/1990
2085	Archers Dart	04/08/2007	05/09/2007	5	27/07/1995
2087	Turnip Moth	24/05/2007	09/10/2007	5	14/05/1997
2088	Heart & Club	06/06/2007	14/07/2007	3	06/06/2007
2089	Heart & Dart	21/04/2007	29/09/2007	83	21/04/2007
2090	Crescent Dart	01/08/2007	01/08/2007	1	07/07/2005
2091	Dark Sword Grass	13/09/2007	11/10/2007	4	23/03/1990
2092	Shuttle-shaped Dart	27/04/2007	06/10/2007	12	25/04/1997
2098	Flame	21/04/2007	20/09/2007	44	21/04/2007
2102	Flame Shoulder	14/04/2007	31/10/2007	153	09/04/2003
2104	Northern Rustic	01/08/2007	06/09/2007	3	11/07/1986
2107	Large Yellow Underwing	12/05/2007	12/10/2007	170	12/05/2007
2109	Lesser Yellow Underwing	23/07/2007	29/09/2007	42	29/06/2003
2110	Bd-hybrid Yellow Underwing	01/08/2007	01/10/2007	4	25/06/2003
2111	Lsr Bd-hd Yellow Uwing	10/07/2007	13/09/2007	61	10/07/2007
2112	Least Yellow Underwing	16/07/2007	25/08/2007	13	24/06/2006
2114	Double Dart	06/06/2007	06/06/2007	1	06/06/2007
2117	Autumnal Rustic	27/08/2007	10/10/2007	23	30/07/1973
2118	True Lovers Knot	17/05/2007	15/09/2007	13	17/05/2007
2120	Ingrailed Clay	21/05/2007	08/08/2007	30	15/05/1995

2122	Purple Clay	10/06/2007	11/08/2007	19	23/05/1995
2123	Small Square-spot	12/05/2007	09/09/2007	27	12/05/2007
2126	Setaceous Hebrew Character	22/05/2007	20/10/2007	53	21/05/1995
2127	Triple-spotted Clay	18/06/2007	11/08/2007	6	15/06/1999
2128	Double Square-spot	06/06/2007	01/08/2007	18	01/06/1992
2130	Dotted Clay	07/07/2007	11/08/2007	16	01/07/1989
2132	Neglected Rustic	27/08/2007	15/09/2007	10	19/08/1991
2133	Six-stripyed Rustic	07/08/2007	22/08/2007	6	16/07/1970
2134	Square-spot Rustic	01/08/2007	20/10/2007	61	23/07/1971
2135	Heath Rustic	08/09/2007	13/09/2007	4	21/08/1990
2136	Gothic	11/07/2007	25/07/2007	3	24/06/2001
2137	Great Brocade	25/08/2007	25/08/2007	1	25/08/2007
2138	Green Arches	05/06/2007	14/07/2007	8	25/05/2001
2139	Red Chestnut	25/03/2007	15/05/2007	9	13/02/1993
2140	White-marked	22/03/2007	20/04/2007	6	22/03/2007
2145	Nutmeg	12/05/2007	14/07/2007	2	12/05/2007
2147	Shears	07/06/2007	02/08/2007	2	04/05/1995
2150	Grey Arches	21/05/2007	14/07/2007	11	21/05/2007
2152	White Colon	06/06/2007	06/06/2007	1	06/06/2007
2154	Cabbage Moth	12/07/2007	22/08/2007	4	23/04/2003
2155	Dot Moth	12/06/2007	23/07/2007	11	27/05/1999
2158	Pale-shouldered Brocade	03/05/2007	04/08/2007	14	03/05/2007
2159	Dog's Tooth	18/07/2007	11/08/2007	5	21/05/2001
2160	Bright-line Brown-eye	30/04/2007	02/09/2007	42	30/04/2007
2162	Glaucous Shears	15/05/2007	15/05/2007	1	01/05/1997
2163	Broom Moth	17/05/2007	14/07/2007	5	17/05/2007
2164	Broad-barred White	06/06/2007	06/06/2007	1	28/05/2003
2166	Campion	21/04/2007	10/06/2007	7	21/04/2007
2173	Lychnis	04/05/2007	25/08/2007	16	30/04/1990
2176	Antler Moth	07/07/2007	06/09/2007	18	14/06/1973
2177	Hedge Rustic	11/08/2007	13/09/2007	5	11/08/2007
2178	Feathered Gothic	25/08/2007	06/09/2007	4	19/08/2003
2179	Pine Beauty	10/04/2007	21/04/2007	4	25/03/2005
2182	Small Quaker	14/03/2007	21/04/2007	17	08/03/1999
2184	Northern Drab	09/04/2007	09/04/2007	1	09/04/2007
2186	Powdered Quaker	11/04/2007	14/04/2007	4	31/03/1990
2187	Common Quaker	14/03/2007	05/05/2007	36	04/03/1989
2188	Clouded Drab	14/03/2007	15/05/2007	25	02/03/1997
2189	Twin-spotted Quaker	14/03/2007	01/05/2007	15	04/03/1993
2190	Hebrew Character	22/03/2007	02/06/2007	50	03/02/1999
2191	Double Line	06/06/2007	14/07/2007	9	01/06/1992
2192	Brown-line Bright-eye	18/07/2007	11/08/2007	8	29/06/2005
2193	Clay	06/06/2007	22/08/2007	29	06/06/2007
2197	Southern Wainscot	10/07/2007	25/08/2007	8	24/06/2006
2198	Smoky Wainscot	06/06/2007	06/09/2007	48	01/06/1992
2199	Common Wainscot	05/06/2007	12/07/2007	7	04/06/2000
2216	Shark	14/07/2007	16/07/2007	2	28/05/2003
2221	Mullein	larvae only	larvae only	3	23/04/2003
2225	Minor Shoulder-knot	04/06/2007	11/08/2007	13	04/06/2007
2232	Black Rustic	11/09/2007	31/10/2007	35	08/09/1992
2235	Tawny Pinion	28/04/2007	28/04/2007	1	28/04/2007
2236	Pale Pinion	no autumn rec	03/05/2007	4	23/09/2006
2237	Grey Shoulder-knot	no autumn rec	14/03/2007	2	23/10/2000
2240	Blair's Shoulder-knot	29/09/2007	20/10/2007	12	23/09/2006
2241	Red Sword-grass	07/10/2007	14/03/2007	3	06/10/2005
2243	Early Grey	07/03/2007	21/04/2007	12	02/03/1993
2245	Green-brindled Crescent	29/09/2007	10/11/2007	22	16/09/2000
2247	Merveille du Jour	02/10/2007	31/10/2007	11	23/09/2006
2248	Brindled Green	18/09/2007	06/10/2007	3	11/09/2000
2250	Dark Brocade	16/06/2007	16/06/2007	1	19/05/2004

2252	Large Ramunculus	15/09/2007	12/10/2007	5	07/09/2004
2258	Chestnut	06/10/2007	12/04/2007	12	17/09/2006
2259	Dark Chestnut	20/10/2007	31/10/2007	2	05/10/2006
2262	Brick	31/10/2007	31/10/2007	1	13/09/2006
2263	Red-line Quaker	02/10/2007	20/10/2007	14	17/09/2006
2264	Yellow-line Quaker	07/10/2007	30/10/2007	4	30/09/1995
2265	Flouced Chestnut	02/10/2007	20/10/2007	14	15/09/2003
2267	Beaded Chestnut	29/09/2007	12/10/2007	11	15/09/2006
2269	Centre-barred Sallow	02/09/2007	02/10/2007	9	19/08/1996
2270	Lunar Underwing	29/09/2007	12/10/2007	13	11/09/1992
2273	Pink-barred Sallow	01/09/2007	12/10/2007	26	24/08/1989
2274	Sallow	09/09/2007	20/10/2007	21	12/08/2004
2278	Poplar Grey	05/05/2007	14/07/2007	5	05/05/2007
2280	Miller	10/06/2007	23/06/2007	4	30/05/2003
2281	Alder Moth	28/04/2007	10/06/2007	11	28/04/2007
2283	Dark Dagger	05/07/2007	05/07/2007	1	30/05/2004
2284	Grey Dagger	05/05/2007	14/07/2007	9	05/05/2007
2289	Knot Grass	28/04/2007	25/08/2007	28	14/04/2003
2291	Coronet	04/05/2007	11/08/2007	11	04/05/2007
2293	Marbled Beauty	16/07/2007	03/09/2007	10	20/06/1998
2295	Marbled Green	16/07/2007	11/08/2007	3	16/07/2007
2297	Copper Underwing	14/07/2007	02/10/2007	38	14/07/2007
2298	Svensson's C. Underwing	14/07/2007	15/09/2007	8	14/07/2007
2300	Old Lady	09/08/2007	25/08/2007	4	01/08/1985
2302	Brown Rustic	15/05/2007	22/06/2007	11	15/05/2007
2305	Small Angle Shades	22/05/2007	11/08/2007	13	09/05/2000
2306	Angle Shades	11/04/2007	20/10/2007	49	12/02/2006
2311	Double Kidney	02/08/2007	21/08/2007	5	07/07/2005
2312	Olive	23/07/2007	23/07/2007	1	23/07/2007
2318	Dun-bar	23/06/2007	20/08/2007	25	23/06/2007
2321	Dark Arches	22/05/2007	13/09/2007	90	22/05/2007
2322	Light Arches	06/06/2007	11/07/2007	8	06/06/2007
2326	Clouded-bordered Brindle	03/05/2007	22/06/2007	12	03/05/2007
2327	Clouded Brindle	10/06/2007	10/06/2007	1	10/06/2007
2329	Confused	02/08/2007	05/09/2007	2	30/07/1984
2330	Dusky Brocade	09/06/2007	22/06/2007	4	16/05/2004
2331	Small Clouded Brindle	15/05/2007	15/05/2007	1	15/05/2007
2334	Rustic Shoulder-knot	12/06/2007	12/06/2007	1	06/05/2002
2335	Slender Brindle	12/07/2007	11/08/2007	5	06/07/2000
2336	Double Lobed	01/08/2007	01/08/2007	1	28/06/1993
2337	Marbled Minor	15/05/2007	12/06/2007	11	15/05/2007
2338	Rufous Minor	22/05/2007	26/06/2007	4	22/05/2007
2339	Tawny Marbled Minor	10/06/2007	02/08/2007	3	24/05/2003
2340	Middle-barred Minor	23/05/2007	11/06/2007	7	23/05/2007
2341	Cloaked Minor	11/08/2007	11/08/2007	2	24/06/2001
2342	Rosy Minor	12/06/2007	15/08/2007	8	12/06/2007
2343.5	Common Rustic. egg	02/07/2007	19/09/2007	93	01/06/1993
2345	Small Dotted Buff	05/06/2007	11/08/2007	8	05/06/2007
2350	Small Wainscot	21/07/2007	18/09/2007	18	21/07/2007
2353	Flouced Rustic	02/07/2007	17/09/2007	29	02/07/2007
2357	Large Ear	21/07/2007	13/09/2007	3	21/07/2007
2360	Ear Moth	18/07/2007	12/08/2007	4	15/07/2006
2361	Rosy Rustic	14/07/2007	07/10/2007	39	14/07/2007
2364	Frosted Orange	15/09/2007	11/10/2007	12	24/08/2003
2368	Crescent	01/08/2007	11/08/2007	3	07/07/1989
2369	Bilrish Wainscot	12/07/2007	11/08/2007	3	08/07/2003
2373	Webb's Wainscot	14/07/2007	22/08/2007	5	14/07/2007
2375	Large Wainscot	05/09/2007	12/10/2007	9	30/08/2005
2379	Small Rufous	01/08/2007	05/09/2007	10	26/06/2005
2380	Treble Lines	21/04/2007	14/06/2007	26	21/04/2007

2381	Uncertain	10/06/2007	09/08/2007	23	28/05/2003
2382	Rustic	07/07/2007	11/08/2007	8	18/06/2005
2384	Vine's Rustic	15/05/2007	12/09/2007	8	15/05/2007
2389	Pale Mottled Willow	24/05/2007	05/10/2007	9	23/05/1998
2394	Anomalous	27/08/2007	13/09/2007	4	05/08/1970
2396	Rosy Marbled	12/06/2007	12/06/2007	1	12/06/2007
2397	Small Yellow Underwing	14/05/2007	20/05/2007	3	14/05/2007
2399	Bordered Sallow	31/05/2007	18/07/2007	6	31/05/2007
2400	Scarce Bordered Straw	09/10/2007	09/10/2007	1	26/07/2006
2410	Marbled White Spot	22/05/2007	14/07/2007	29	14/05/2000
2412	Silver Hook	29/05/2007	29/05/2007	1	27/05/1989
2421	Scarce Silver Lines	07/06/2007	11/08/2007	6	07/06/2007
2422	Green Silver Lines	02/06/2007	12/06/2007	2	12/05/2000
2423	Oak Nyctoline	(14/03/2007)	(27/08/2007)	4	not defined
2425	Nut-tree Tussock	12/04/2007	15/08/2007	22	21/03/1971
2434	Burnished Brass	07/06/2007	11/08/2007	5	07/06/2007
2435	Scarce Burnished Brass	10/07/2007	10/07/2007	1	21/06/2003
2437	Golden Plusia	22/08/2007	22/08/2007	1	10/07/1975
2439	Gold Spot	30/04/2007	11/09/2007	6	30/04/2007
2441	Silver Y	28/04/2007	18/10/2007	55	01/02/2003
2442	Beautiful Golden Y	02/06/2007	12/07/2007	9	26/05/2004
2443	Plain Golden Y	08/06/2007	11/08/2007	5	16/05/1988
2449	Dark Spectacle	14/07/2007	25/08/2007	3	16/05/2006
2450	Spectacle	28/04/2007	27/08/2007	41	28/04/2007
2462	Mother Shipton	04/05/2007	07/06/2007	2	04/05/2007
2466	Blackneck	06/06/2007	06/06/2007	1	01/06/1992
2469	Herald	30/07/2007	24/05/2007	12	not defined
2474	Straw Dot	12/05/2007	09/10/2007	44	12/05/2007
2476	Beautiful Snout	22/05/2007	03/07/2007	9	22/05/2007
2477	Snout	05/06/2007	11/10/2007	40	26/05/2001
2484	Pinion-streaked Snout	18/06/2007	13/10/2007	17	25/05/2005
2485	Marsh Oblique-barred	11/08/2007	11/08/2007	1	07/07/1975
2489	Fan-foot	05/06/2007	24/08/2007	16	05/06/2007
2492	Small Fan-foot	15/05/2007	22/08/2007	17	15/05/2007

HIGHLIGHTS OF 2007

The following are culled and re-edited from the monthly bulletins, with a few additions. As I stated in last year's report I am now treating all Rothamsted trap records as separate from those which have been properly channelled and assessed through the county recorder, but will continue to mention those that I am aware of, separately.

163 FORESTER *Adscita statices*

This lovely day-flying moth was seen on several occasions during June in the Gelli area of Rhydcymerau (SN5739) by both Julian Wormald and Martin Lovell. Thirteen previous county records.

373 CURRANT CLEARWING *Synanthedon tipuliformis*

One came briefly to pheromone lures at the regular (only) site, Johnstown Water Meadows (SN4019) on 26th June. This is the 6th time this species has occurred here, and it would be nice to have some sightings from another location.

380 RED-TIPPED CLEARWING *Synanthedon formicaeformis*

One seen on 1st June, though unfortunately not caught, by Ian Morgan, at Pontnewydd (SN437073). This constitutes the 2nd County Record – the first being another daytime observation by Ian (June 1990, at Coed Gwempa, SN433116). Although I would obviously prefer any clearwing record to be supported by a photograph or specimen, I am more than happy to accept this record from Ian's account. Let's hope it isn't another 17 years before one is seen again.

382 SIX-BELTED CLEARWING *Bembecia ichneumoniformis*

The 13th county record, swept by day from its foodplant bird's-foot trefoil *Lotus* sp by Ian Morgan on 8th July at Llanelli North Dock (SS4999). A new 10km square record.

1479 INDIAN MEAL MOTH *Plodia interpunctella*

A new species of Pyralid for the county was found at Penclacwydd (SS532985) on 16th September by Barry and Sandra Stewart, hiding behind some books in the gift shop. Two individuals were seen and Barry hypothesises that they were probably imported on the grain sold for feeding the ducks. Photographed and released.

1647 BARRED HOOK-TIP *Watsonalla cultraria*

The first record in the county since 1971 – and the first record to be fully documented and accepted through the county recorder. Came to actinic light on NMN, 11th August at Byrgwm (SN5532, David Groom et al.). Lives on beech *Fagus sylvatica*.

1661 ORANGE UNDERWING *Archiearis parthenias*

A record was received from a visiting entomologist, Derek Coleman, who saw two around birches by day at Dinas RSPB reserve (SN783467) on 8th April. This is only the third time this species has been recorded in the county, with previous records at SN3825 in 2002 (JSB) and SN7747 in 1992 (R A Hughes). Yet to be photographed in the county it remains on the 'A2 list' of the county database.

1733 LEAD BELLE *Scotopteryx mucronata*

There were three records of this species during June on 6th at Rhydcymerau (SN5739, Martin Lovell), 8 on 16th at Banc Melyn, Brechfa (SN5440, Martin Lovell) and 2 on 17th at Cwm Holdfast (SN7926, Sam Bosanquet). There are only four previous non-Rothamsted records on file, and these are therefore significant records. I do urge people to try to photograph records of the two Belle species, as they are very difficult to differentiate, and there is also the problem with **Brown Silver-line** *Petrophora chlorosata* having been misidentified as one of these in the past.

1734 JULY BELLE *Scotopteryx luridata*

There are nine previous records on the county database, but all are of ones or twos. So although perhaps slightly commoner than Lead Belle, it is still a rarely encountered species. Martin Lovell recorded this species twice, with two on 16th June and three on 8th July at Banc Melyn, Brechfa (SN5440). Also recorded by Ian Morgan, with four north of Ashpit Ponds (SN4601) on 19th June. As with the previous species, photos of records are still preferred, to rule out any identification errors.

1739 WOOD CARPET *Epirrhoe rivata*

Very few records of this species, which can be tricky to separate from **Common Carpet** *E. alternata*, have been made away from Pembrey, where it is uncommon but frequent. So a record on 19th June, by day, along the Cwmann Railway Line (SN5847) by Sam Bosanquet is a good inland record from a new 10km square. Photographic proof is preferred of claims from new sites.

1753 STRIPED TWIN-SPOT CARPET *Nebula salicata*

Six to light at Palycwrt on Mynydd Du on 2nd August (SN6718, Ian Morgan). An upland species that is rarely recorded in the county simply due to lack of trapping at the correct altitude. Lives on bedstraws *Galium sp.*

1782 FERN *Horisme tersata*

Trapped and photographed by Mat Ridley on 5th September at Carmel (SN5816). This is a very local and restricted species in the county with just four previous records (plus two more from Rothamsted at St Clears). Lives on traveller's-joy *Clematis vitalba*.

1784 PRETTY CHALK CARPET *Melanthia procellata*

Previous records (5) come from Llandyfaelog (SN4210), twice at Carmel Woods, twice at Pembrey Forest with further Rothamsted records from the trap at St Clears (SN2517). With traveller's-joy *Clematis vitalba* being quite scarce in the county, this is a very local species. Ian Morgan beat one from the foodplant near Carmel (SN6016) on the afternoon of 14th July. Four more beaten from the food-plant at Carmel Woods (SN5916) on 18th July (JSB).

1793 CLOAKED CARPET *Euphyia biangulata*

At last this species moves to Category **A1** of the Carms List, thanks to a photographed individual caught by Martin Lovell at Rhydcymerau (SN5739) on 10th July. There have been previous claims (mainly Rothamsted and therefore unchecked by the county recorder).

1859 SLOE PUG *Pasiphila chloerata*

Following on from the 1st VC record last year, another was caught just a few hundred yards away, this time in Ian Morgan's garden at Pwll (SN4601) on 6th June (det:JSB).

1873 WELSH WAVE *Venusia cambrica*

Previous records: 13 (and 8 Rothamsted). 10km squares it has been recorded from are: SN32, SN33, SN53 and SN54. The Rothamsted records are from SN74 (with one suspect one from SN23). Brechfa Forest is the best place to find this species.

Seen on four occasions in Brechfa by Martin Lovell and the Carmarthenshire Moth Group - on 22nd May (SN5537), 5th June (SN5533), 11th August (SN5532) and 16th August (SN5232). Would be nice to get some records from outside of the currently known range, perhaps in SN42 or SN43.

1901 LITTLE THORN *Cepphis advenaria*

In the introduction to my review of 2006 I listed this species on the county **RED** list. I have never found any record of this in any of the data I inherited when I became county recorder, but was aware that Steve Lucas had listed it in a provisional summary of the county's moths a decade ago – on what evidence, I do not know. This species can now be upgraded to Category **A1**, with a photographed individual caught in the Gorlech Valley in Brechfa (SN5537) by Martin Lovell on 22nd May. Until such a time as an old record comes to light, this stands as the 1st VC44 record of this lovely species. Hopefully it will be found at other locations in Brechfa and beyond. It lives on bilberry and bramble, and flies by day as well as at night.

1964 ANNULET *Charissa obscurata*

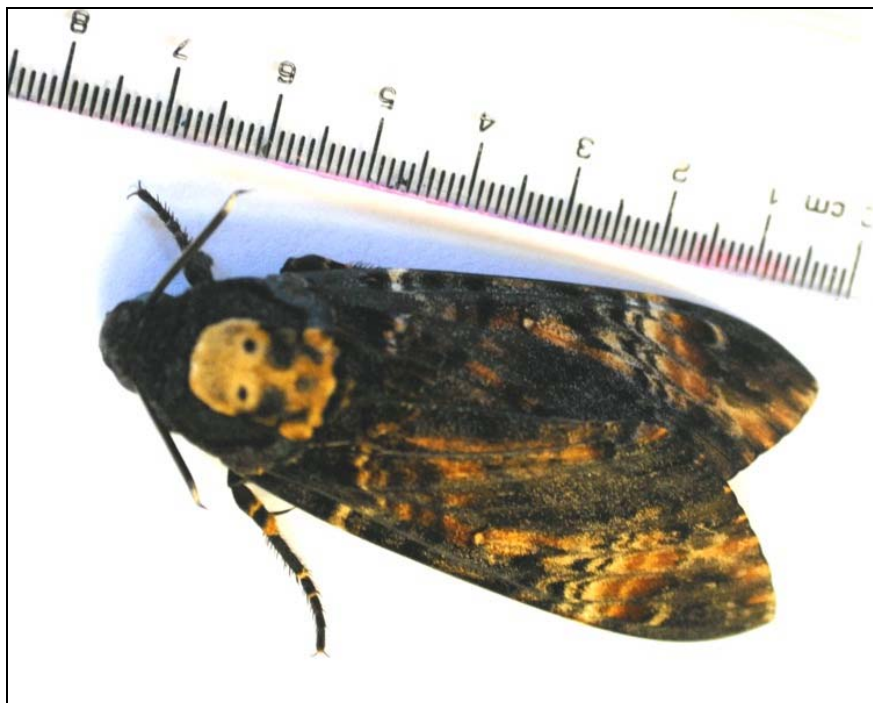
Four to light at Palycwrt on Mynydd Du on 2nd August (SN6718, Ian Morgan). A very local species of coast, heath and upland, there have been just six previous records. Various foodplants.

1972 CONVULVULUS HAWK-MOTH *Agrius convolvuli*

On 29th August Simeon Jones reported a "Privet Hawk-moth" at Pembrey Burrows (SS4299), dead, impaled on barbed wire. Given the late date and the fact that I have never had Privet Hawk in the dunes, I asked Simeon if he could try photographing the moth (if it was still there) and to look out for a shrike! A week later Simeon sent me the photo. The moth had, amazingly, still been there (no shrike...) and as I had suspected it was not a Privet, but a Convolvulus which had met such a sad end. This is the first record for Pembrey, and the 17th County Record.

1973 DEATH'S-HEAD HAWK-MOTH *Acherontia atropos*

A very gripping record, through Tim White, a pest control officer for Carmarthenshire County Council, who had been called to an address in Llanelli (SN506004) on 23rd October to deal with the 3rd county record of *A. atropos*. The beast was released after being photographed and before I was informed.



1979 LIME HAWK-MOTH *Mimas tiliae*

Ian Morgan had added this to the county list in June 2005, when he caught a single in his Pwll garden (SN4601). During 2007 he caught it on 7 further dates in his Pwll garden, and also in a garden on the other side of Llanelli at Llwynhendy (SS5399), clearly showing that the species is very well established in the Llanelli coastal area. Given that lime *Tilia* is not especially common in the area, Ian hypothesises that elm *Ulmus* may be the foodplant in the Llanelli area.

1990 STRIPED HAWK-MOTH *Hyles livornica*

One to MV light in my garden in Carmarthen (SN3919) on 2nd July was most unexpected. Photographed and released. The 5th modern record, all in the last 5 years.

1996 ALDER KITTEN *Furcula bicuspis*

Previous county records: 7 times in SN61, and on single occasions in SN32, SN42 and in SN53. A scarce species in the county and very local. Caught again during 2007 in SN53, this time by Martin Lovell at SN5739 on 3rd May (and photographed).

2017 SMALL CHOCOLATE-TIP *Clostera pigra*

Larvae found on young aspen *Populus tremula* at Butterfly Conservation's Caeau Ffos Fach NR (SN5711) from 24th May onward, by Martin Warren *et al.* . Nearly all records in the county have been from Pembrey, so it is good to know that there are inland populations too. Also one to light in Pembrey Burrows (SS4299) on 18th July.

2038 MUSLIN FOOTMAN *Nudaria mundana*

Found again at Gelli Aur CP (SN5919) by Ian Morgan on 26th June and 10th July. So far the only current population of it in the county.

2043 ORANGE FOOTMAN *Eilema sororcula*

Recorded in 2005 and 2006 in Pembrey Forest, this species is looking like it may be spreading, with a 3rd county record on 4th June along the coast at Pwll (SN4601) in Ian Morgan's garden trap. Look out for it turning up at other sites in the next couple of years.

2051 FOUR-SPOTTED FOOTMAN *Lithosia quadra*

At Pwll (SN4601) there were two on 18th July and another on 27th (all Ian Morgan), whilst I had one at Nantgwyn (SN3623), north of Carmarthen on 12th July. Four records of singles in August, showing an increasing spread of this species to new parts of the county. Singles at Gellywen (SN2723) on 10th and 11th August (Lee Walker), and further singles on 11th August at Pembrey Forest (SN3803, JSB and Lee Walker) and Troserch (SN5503, Colin Jones). The last with an undeveloped wing proving it unlikely to be a migrant. Lives on lichens. Twelve recent records (since 2003) – ten from Pembrey Forest.

2090 CRESCENT DART *Agrotis trux*

I had five to light at Telpyn Point (SN1807) on 1st August. This is one of the few sites that this species has previously been recorded at. It remains very local and under-recorded in the county, with just seven previous records from the last 100 years.

2104 NORTHERN RUSTIC *Standfussiana lucernea*

With just one previous record from 1985, this species was recorded three times this year. The first was a single netted at dusk on the coast at Telpyn Point (SN1807) on 1st August (JSB, photographed). This only just pipped Ian Morgan to it, as the very next night he got nine to light at Palycwrt, Mynydd Du (SN6718). He also caught six on 9th September at the same site. Also photographed by JSB. Lives on various grasses on rocky coasts and mountains.

2132 NEGLECTED RUSTIC *Xestia castanea*

There are just 14 previous county records of this species, which is locally common on heaths and moors. With these habitats receiving considerable attention this year, there were a notable number of records (10 records, 57 moths).

27/08/2007	3	Llwynidrissi Forest edge	SN5641	Martin Lovell
06/09/2007	1	Brechfa	SN5029	Carms Moth Group
06/09/2007	5	Pencarreg Mountain	SN6141	Julian Wormald
08/09/2007	1	Fforest, S of Ty-llwyd	SN5706	Ian Morgan
09/09/2007	23	Garn-bijj Carmel	SN5815	Ian Morgan
11/09/2007	1	Mynydd y Garreg	SN4308	Ian Morgan
12/09/2007	8	Brechfa, Banc Melyn	SN5440	Carms Moth Group
13/09/2007	3	Bryfa Forest Byrgwm	SN5532	Carms Moth Group
13/09/2007	10	Mynydd Isaf	SN6716	Ian Morgan
15/09/2007	2	Cencoed-uchaf	SN4803	Ian Morgan

2135 HEATH RUSTIC *Xestia agathina*

With just one previous record from 1990, this species was recorded at multiple locations and in some considerable numbers this year, mainly due to targeting by Ian Morgan.

08/09/2007	68	Fforest, S of Ty-llwyd	SN5706	Ian Morgan
09/09/2007	19	Garn-big Carmel	SN5815	Ian Morgan
12/09/2007	4	Brechfa, Banc Melyn	SN5440	Carns Moth Group
13/09/2007	7	Mynydd Isaf	SN6716	Ian Morgan

2137 GREAT BROCADE *Eurois occulta*

The first county record, caught at Llanelli North Dock (SS4999) on 25th August by Chris Manley and photographed. Occurred at a time when many were being seen in England, presumably migrants from northern Europe.

2140 WHITE-MARKED *Cerastis leucographa*

An excellent number of records from its “stronghold” in the Brechfa area (SN53), with Martin Lovell recording it on 6 occasions between 22nd March and 20th April (up to 3 a night). Previous county records are: once in SN12 (2006), and three times in SN53 (2005 & 2006). There are 19 Rothamsted records (17 from SN74, and singles from SN23 and SN52).

2145 NUTMEG *Discestra trifolii*

There are only eight previous county records of this species: all coastal in the SE corner of the county (3 from SN40, 4 from SS49 and 1 from SS59). Caught twice at Pwll (SN4601) by Ian Morgan and confirmed from specimens by JSB on 12th May and 14th July.

2152 WHITE COLON *Sideridis albicolon*

All modern records have come from the coastal area between Llanelli and Pembrey, with six records in the last ten years. Perhaps becoming more common, or maybe due to more trapping being done in the right areas. One caught at Llanelli North Dock (SS4999) by Simeon Jones on 6th June (identified by IKM and confirmed by JSB).

2162 GLAUCOUS SHEARS *Papestra biren*

Previous county records: just four from SN61, SN71 and SN32, with 15 Rothamsted records (13 from SN74 and 2 from SN23). Last recorded on the Black Mountain in 2004, so nice to have a great record from this year. Martin Lovell caught 11 on Mynydd Llanllwni (SN5138) on 15th May. A new 10km square for a species that is likely to be more widespread than current records suggest.

2184 NORTHERN DRAB *Orthosia opima*

With the first county record only made in 2006 by Julian Wormald, it is great to have such a solid second record, albeit from the same area. Martin Lovell recorded 13 on Mynydd Llanybydder (SN5339) on 9th April.

2235 TAWNY PINION *Lithophane semibrunnea*

No previous claims of this species have been supported well enough, given its possible confusion with dark Pale Pinions. So a fully documented individual on 28th April in Ian Morgan's garden trap at Pwll (SN4601) was most welcome. This constitutes the first record for VC44. Photographed.

2250 DARK BROCADE *Blepharita adusta*

Martin Lovell scored the 7th County Record on 16th June at Banc Melyn, Brechfa Forest (SN5440), a new 10km square for this scarce species.

2300 OLD LADY *Mormo maura*

There had been just 9 previous county record of this lumbering beast that is notorious for not being readily attracted to light. So, four (plus one) in a month is a very good show. The first was at Gellywen(SN2723) on 9th August (Lee Walker), then in my Carmarthen garden (SN3919) on 11th, a third was caught on 16th August at Pembrey Post Office (SN4201) by Huw John and the fourth was caught on 25th August at Gwernogle (SN5234) by David Groom and Faye Sharpley. A fifth individual was found dead in a car at Gwernogle on 26th, but as with all corpses in cars, the record is sadly not worth recording, as origin cannot be proven.

2312 OLIVE *Ipimorpha subtusa*

Virtually all have records of this species have been from the south-east of the county. Caught at Pwll by Ian Morgan on 23rd July (SN4601). The 14th county record.

2327 CLOUDED BRINDLE *Apamea epomidion*

The 7th County Record was caught at MV at Cynheidre (SN4908) on 10th June. Lives on various grasses and is surprisingly uncommon in the county.

2329 CONFUSED *Apamea furva britannica*

A very tricky little beast to identify, so records need to be properly backed up with photographs. There had been one previous record from 1984 (Rhandirmwyn, SN74, Bernard Skinner). Ian Morgan scored a mint individual at Palycwrt, Mynydd Du (SN6718) on 2nd August, which I was more than happy to photograph and confirm. Ian scored this species again, finding one at Gelli Aur CP (SN5919) on 13th September - the 3rd County record. Seen and confirmed by JSB, and released.

2336 DOUBLE LOBED *Apamea ophiogramma*

Caught in my Carmarthen garden (SN3919) on 1st August. Seven previous county records (plus one Rothamsted record). Lives in damp environments where reed canary-grass *Phalaris arundinacea* and reed sweet-grass *Glyceria maxima* grow.

2357 LARGE EAR *Amphipoea lucens*

The status of the various species of *Amphipoea* within the county is a conundrum, due to the fact that they really do need to be confirmed with dissection to prove which of the four species they are. Since I started this process a few years back I have recorded **Ear Moth** *A. oculea* regularly at Pembrey and at a few other sites, and also had three single **Large Ear** *A. lucens*, invariably later in the season, from Pembrey Forest, Pembrey Burrows and here in Carmarthen.

So when Ian Morgan caught 40 plus ear sp. on the Black Mountain (SN6716) on 13th September, it was a great opportunity to see which of the species flies on our

mountainsides in the middle of September. It would have been nice to find they were **Crinan Ear** *O. crinanensis* – a species yet to be confirmed from Carmarthen, but they turned out to be **Large Ears**. I also dissected some specimens caught by Ian earlier in the year, at Llangennech (SN5601) on 21st July and at Palycwrt (SN6718) on 2nd August, which also turned out to be **Large Ears**. It seems likely, though unproven that the ears seen by Martin Lovell on 27th August at Llwyndrissi (SN5641) were also **Large Ear**. I do urge anyone catching them next year, in new locations to keep a male for examination.

2372 WEBB'S WAINSCOT *Archanara sparganii*

The 8th through 12th county records. All previous county records have come from SN30, SN40 and SS59.

14/07/2007	1	Cynheidre	SN4908	Jon Baker
23/07/2007	1	Tyrwauon, Pwll	SN4601	Ian Morgan
04/08/2007	1	Erw Las, Llywnhendy	SS5399	Ian Morgan
11/08/2007	1	Glynea Pond, Bynea	SS5598	Ian Morgan
22/08/2007	1	Erw Las, Llywnhendy, recolled	SS5399	Ian Morgan

2396 ROSY MARBLED *Elaphria venustula*

Star moth of the year possibly, was this totally unexpected find, coming to MV at Erw Las, Llywnhendy (SS5399) on 12th June. Caught by Ian Morgan, it was identified (and photographed and released) by JSB. This species' distribution is confined to the southeast of England and I have yet to find any previous Welsh records apart from one in 1886 at Port Talbot, Glamorgan (Barry Stewart, pers. comm.). Goes to show that nothing is totally unpredictable.

2400 SCARCE BORDERED STRAW *Helicoverpa armigera*

The only one recorded this year, after the massive numbers in 2006 was a single on 9th October at Pwll (SN4601), caught by Ian Morgan and determined by JSB.

2435 SCARCE BURNISHED BRASS *Diachrysia chryson*

One to MV at Pwll (SN4601) on 10th July (Ian Morgan). Twenty-four of the previous Twenty-five records have come from the south-east coastal area of the county. **Nationally Rare A.** Lives on hemp agrimony *Eupatorium cannabinum*.

2437 GOLDEN PLUSIA *Polychrysia moneta*

This moth has not been seen in the county since 1995. There were just five records, mostly in the early nineties, and with the decline of this species nationally it was feared that it might not be seen again here. But Ian Morgan got rewarded for planting delphiniums in his garden at Pwll (SN4601) with one turning up in his trap on 22nd August. Photographed by JSB next day.

THANK YOU TO ALL WHO MADE THIS REPORT POSSIBLE. GOOD LUCK FOR 2008, AND KEEP YOUR RECORDS COMING IN.

JON BAKER, February 2008.